

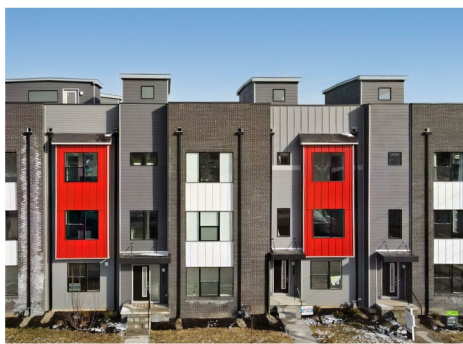
# COLERE

BY ONYX+EAST



## MODERN LIVING IN HISTORIC FOUNTAIN SQUARE

Designed and crafted with your life in mind, Colere townhomes include stunning rooftop terraces with Indy skyline views and attached private garages. Colere's offering includes townhomes, single-family Alloy homes and duplexes, all with common area courtyards and open floor plans with flexible spaces that easily adapt to your style.



FROM THE HIGH 300k's

FROM THE 500k's

### TOWNHOMES

- + 2 to 4 Bedrooms
- + 2.5 to 3 Baths
- + 1,530 to 2,081 Sq Ft

### DUPLEX

- + 2 Bedrooms
- + 2.5 Baths
- + 1,364 Sq Ft

### ALLOY

- + 3 to 5 Bedrooms
- + 2.5 to 4 Baths
- + 1,911 to 2,187+ Sq Ft



## LOCATED IN THE HEART OF FOUNTAIN SQUARE

Located in Historic Fountain Square, Colere is a bike-friendly area that is near offbeat nightlife including indie music, comedy and burlesque clubs, craft cocktail bars and local eateries.



Amberson Coffee + Grocer, Geraldine's Supper Club, Hotel Tango, Milktooth, Sam's Silver Circle and more

