

# SANDSTONE

## ALLOY

BY ONYX+EAST.



2,395 sq. ft.



3 Bed



2.5 Bath



2-Car Attached

The Sandstone opens up to the foyer and leads to the main living space. This floor plan features an open-concept living and dining room area with double-doors leading to your back patio. The kitchen is complete with a large center island with breakfast bar, ample counter and cabinet space, buffet and pantry. The first floor also features a powder bath and coat closet. The primary bedroom suite is highlighted by an oversized walk-in closet and spa-like bathroom with dual vanity sinks, private water closet, and floor-to-ceiling tile shower. The two secondary bedrooms each feature closets and a shared full bath. The second floor also has a laundry room and spacious loft, perfect for an open office or reading nook.

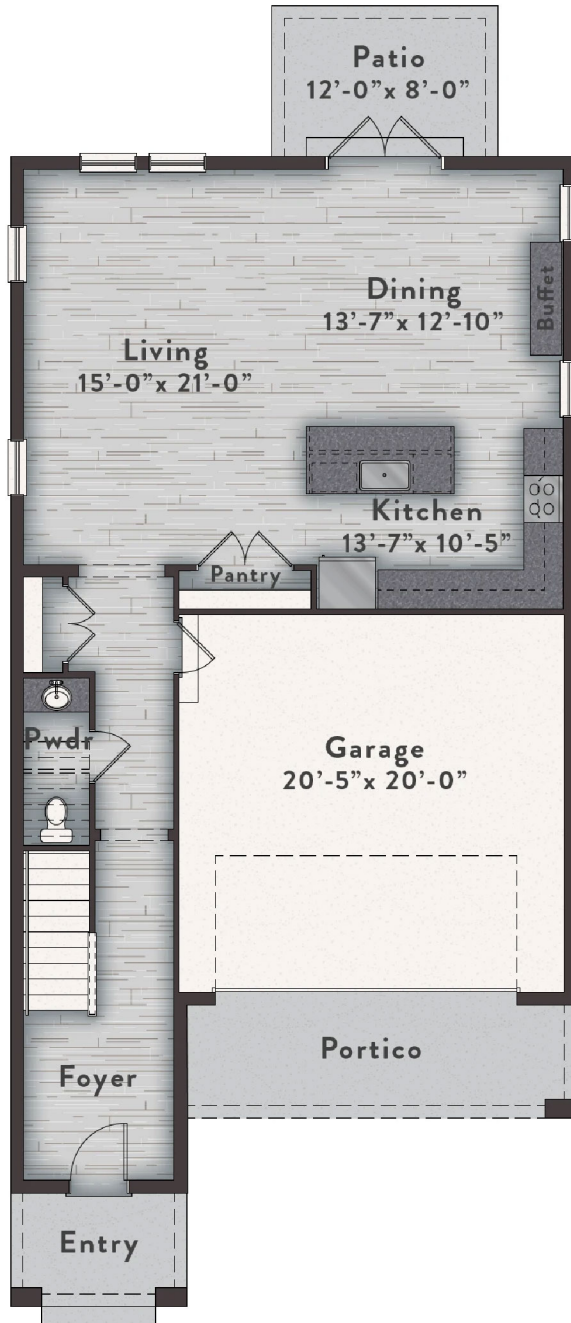
Check Us Out!



# SANDSTONE

3 Bed | 2.5 Bath | 2,395 sq. ft.

## FIRST FLOOR



## SECOND FLOOR

