

COLEMAN ALLOY

BY ONYX+EAST



1,884 sq. ft.



3 Bed



2.5 Bath



2-Car Attached

The Coleman is a two-story home that features three bedrooms, two-and-a-half bathrooms, a dining nook, two-car garage, and loft. The gathering room flows from the kitchen, letting the chef stay a part of the conversation. The kitchen is complete with a large center island with breakfast bar, ample counter and cabinet space and pantry. The first floor also features a powder bath, boot bench, and extra storage spaces. The primary bedroom suite is highlighted by an oversized walk-in closet and spa-like bathroom with dual vanity sinks, private water closet, and floor-to-ceiling shower. The two secondary bedrooms each feature walk-in closets and a shared full bath. The second floor also has a laundry room and spacious loft, perfect for an open office or reading nook.

Check Us Out!



SCAN ME



Coastal Elevation



Farmhouse Elevation

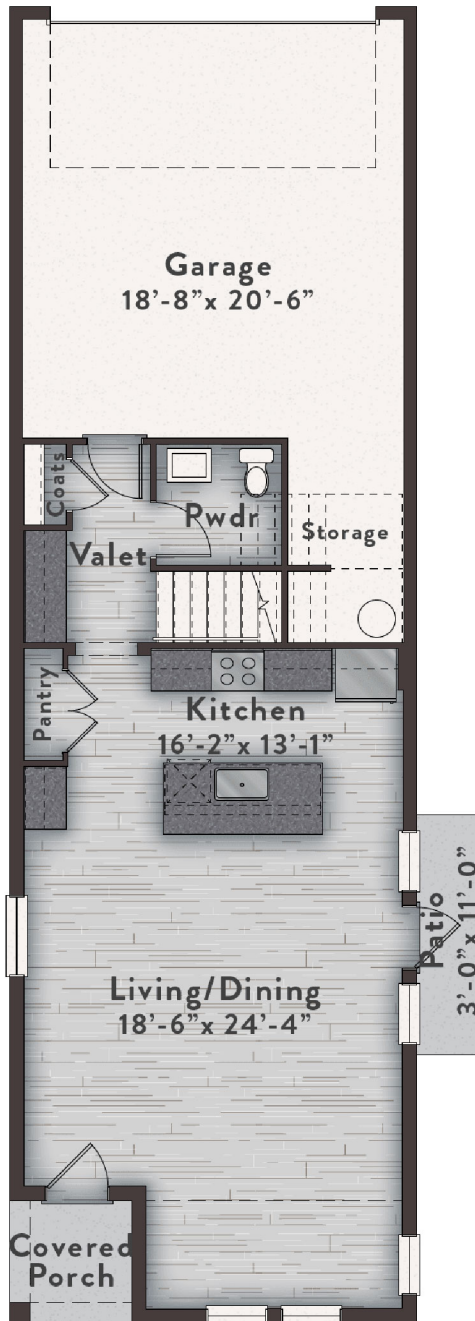


Low Country Elevation

COLEMAN

3 Bed | 2.5 Bath | 1,844 sq. ft.

FIRST FLOOR



SECOND FLOOR

